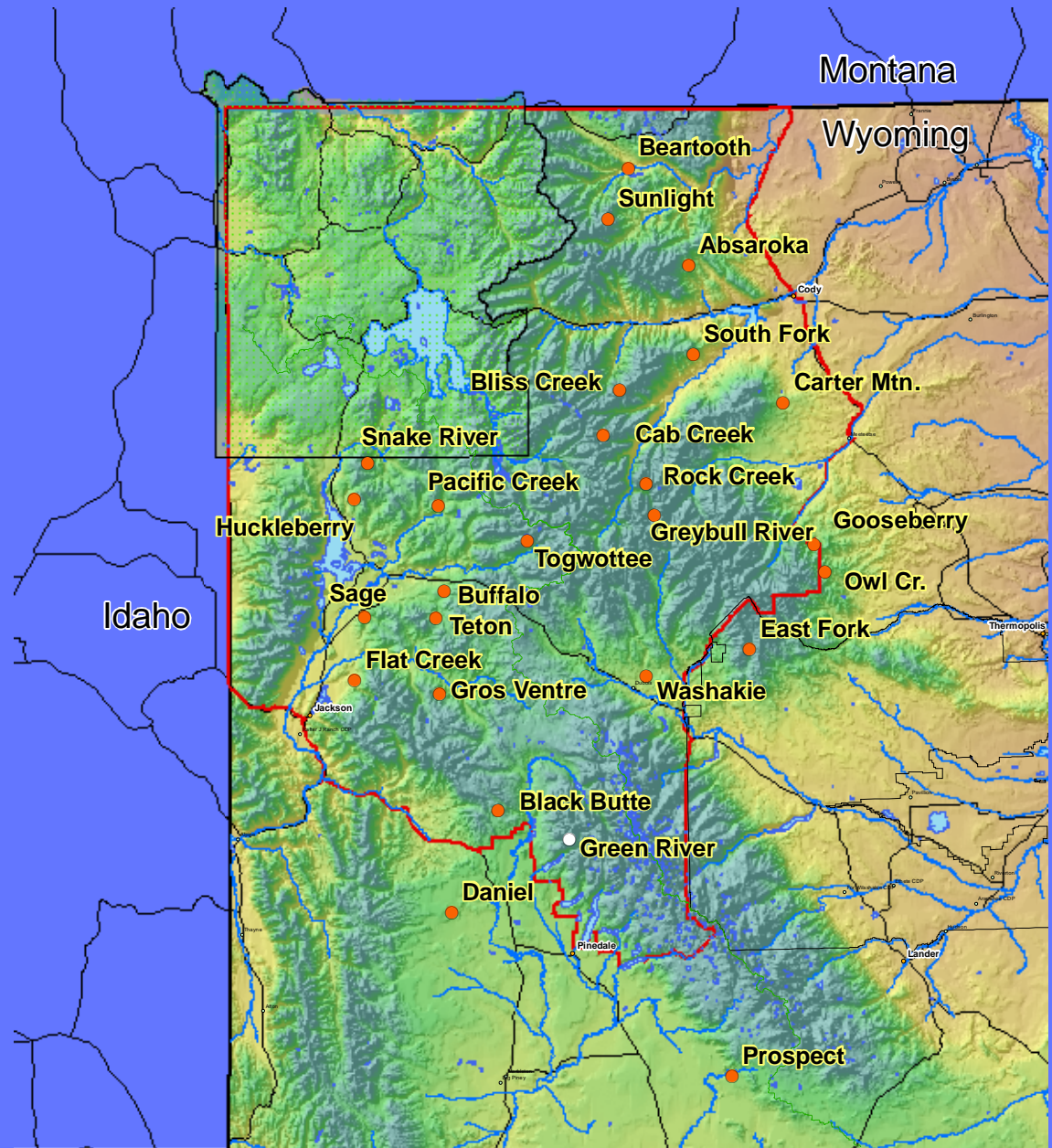


# Wyoming Wolf Population

(outside YNP) - November 2006

Known Packs			
	Wolf Pack	Adults	Pups
1	Beartooth	5	?
2	Sunlight Basin	11	5
3	Absaroka	5	1
4	Greybull River	2	6
5	Rock Creek (split off from Greybull)	3	2
6	South Fork	2	4
7	Gooseberry	2	2
8	Teton	4	0
9	Buffalo	7	8
10	Pacific Creek	9	4
11	Washakie	5	5
12	East Fork	8	?
13	Black Butte	7	?
14	Gros Ventre	2	4
15	Huckleberry	3	4
16	Owl Creek	2	3
17	Togwottee	7	?
18	Daniel	4	?
19	Prospect	>4	?
20	Bliss Creek	4	2
21	Snake River Pack	>2	>4
22	Cub Creek	3	>1
<b>Total</b>		<b>101</b>	<b>55</b>
Suspected/Possible Packs			
1	Flat Creek	6	?
2	Sage	2	?
3	Big Horn Mtns.	4	?
4	Carter Mtn.	5	0
<b>Total</b>		<b>17</b>	<b>?</b>
Misc. Wolves			
Big Piney		>4	?
Kemmerer		>2	?
Pinedale/Cora		>5	?
<b>Total</b>		<b>11</b>	<b>?</b>



Wolf distribution information provided by:  
 U S Fish and Wildlife Service  
 Map created by: Wyoming Game & Fish Dept.  
 Engineering Section 12/15/06

## Wyoming Wolf Population (outside YNP) – November 2006

**Minimum fall population:** 184 (approx. 27% increase from 2005)

**Documented packs:** 22 packs (plus 4 suspected packs)

**Breeding packs:** 15

**Reproduction:** >55 pups

**Mortality:** Control = 44 (80% of total mortality); Human = 5 (9%); Natural = 2 (4%);  
Unknown = 4 (7%)

**Monitoring:** 29 collars in 16 packs (~ 16% of population and ~62% of packs);  
8 collars missing (~4% of population)

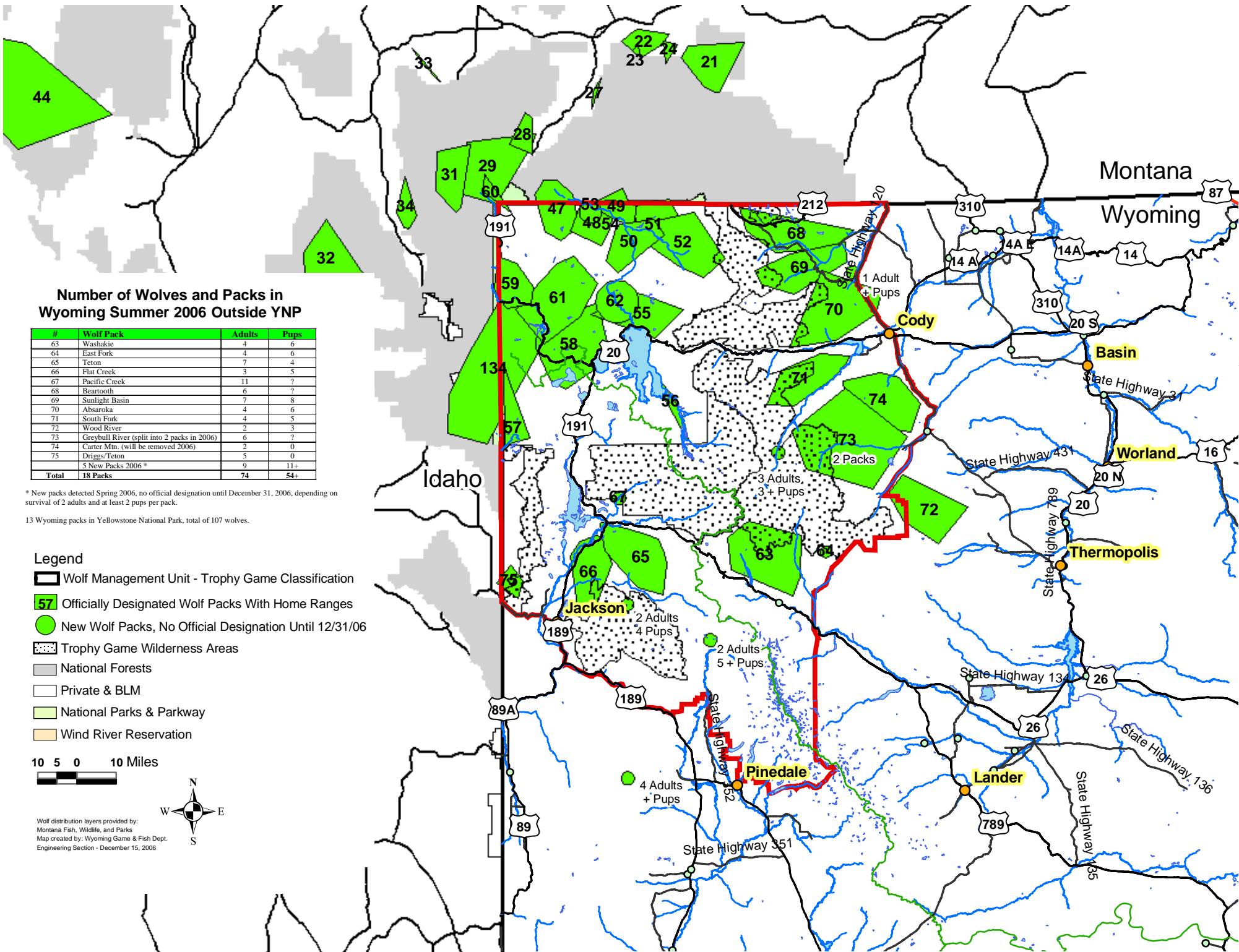
<b>Pack Name</b>	<b>Total # of Wolves</b>	<b>Pack Composition</b>	
		<b># Adults</b>	<b># Pups</b>
1) Beartooth	>5	5	?
2) Sunlight Basin	16	11	5
3) Absaroka	6	5	1
4) Greybull River	8	2	6
5) Rock Creek (split off from Greybull)	5	3	2
6) South Fork	6	2	4
7) Gooseberry	4	2	2
8) Teton	4	4	0
9) Buffalo	15	7	8
10) Pacific Creek	13	9	4
11) Washakie	10	5	5
12) East Fork	8	8	?
13) Black Butte	7	7	?
14) Gros Ventre	6	2	4
15) Huckleberry	7	3	4
16) Owl Creek	5	2	3
17) Togwottee	7	7	?
18) Daniel	4	4	?
19) Prospect	>4	>4	?
20) Bliss Creek	6	4	2
21) Snake River Pack	>6	>2	>4
22) Cub Creek	4	3	>1
	156	101	55

### **Suspected/Possible Packs**

1) Flat Creek	>6	6	?
2) Sage	>2	2	?
3) Big Horn Mtns.	4	4	?
4) Carter Mtn.	5	5	0
	17	17	?

### **Misc. Wolves**

Big Piney	>4	>4	?
Kemmerer	>2	>2	?
Pinedale/Cora	>5	>5	?
	11	11	



**Number of Wolves and Packs in Wyoming Summer 2006 Outside YNP**

#	Wolf Pack	Adults	Pups
63	Washakie	4	6
64	East Fork	4	6
65	Teton	7	4
66	Flat Creek	3	3
67	Pacific Creek	11	?
68	Beartooth	6	?
69	Sunlight Basin	7	8
70	Absaroka	4	6
71	South Fork	4	5
72	Wood River	2	3
73	Greybull River (split into 2 packs in 2006)	6	?
74	Carter Mtn. (will be removed 2006)	2	0
75	Driggs/Teton	5	0
	5 New Packs 2006*	9	11+
<b>Total</b>	<b>18 Packs</b>	<b>74</b>	<b>54+</b>

\* New packs detected Spring 2006, no official designation until December 31, 2006, depending on survival of 2 adults and at least 2 pups per pack.

13 Wyoming packs in Yellowstone National Park, total of 107 wolves.

**Legend**

- Wolf Management Unit - Trophy Game Classification
- Officially Designated Wolf Packs With Home Ranges
- New Wolf Packs, No Official Designation Until 12/31/2006
- Trophy Game Wilderness Areas
- National Forests
- Private & BLM
- National Parks & Parkway
- Wind River Reservation

10 5 0 10 Miles



Wolf distribution layers provided by:  
 Montana Fish, Wildlife, and Parks  
 Map created by: Wyoming Game & Fish Dept.  
 Engineering Section - December 15, 2006

## Summary Statistics of Home Range Data for Wyoming Packs (outside YNP) – 2005

### 1) Total home range size (miles<sup>2</sup>) for 10 wolf packs located in various land use designations

Total HR area (mi <sup>2</sup> )	Mi <sup>2</sup> HR in Forest (incl. wilderness)	Mi <sup>2</sup> HR in Forest (exc. Wilderness)	Mi <sup>2</sup> HR in Wilderness	Mi <sup>2</sup> HR in GTNP/NER	Mi <sup>2</sup> HR in Private
2,163	1,337	1035	302	92	734

### 2) Percentage of 10 wolf pack home range areas within various land use designations

Total HR area (mi <sup>2</sup> )	% HR in Forest (incl. wilderness)	% HR in Forest (exc. Wilderness)	% HR in Wilderness	%HR in GTNP/NER	% HR in Private
2,163	62%	48%	14%	4%	34%

### 3) Home range size (miles<sup>2</sup>) for each wolf pack located in various land use designations

Pack	HR Area (mi <sup>2</sup> )	Mi <sup>2</sup> HR in Forest (incl. Wilderness)	Mi <sup>2</sup> HR in Forest (excl. Wilderness)	Mi <sup>2</sup> HR in Wilderness	Mi <sup>2</sup> HR in GTNP/NER	Mi <sup>2</sup> HR in Private
1) Washakie	249	192	134	58	0	57
2) Teton	186	165	165	0	21	0
3) Flat Creek	136	71	60	11	66	0
4) Beartooth	182	182	160	22	0	0
5) Sunlight Basin	166	158	133	25	0	8
6) Absaroka	254	156	125	31	0	98
7) South Fork	149	103	48	55	0	46
8) Wood River	178	14	14	0	0	164
9) Greybull River	443	261	160	101	0	182
10) Carter Mountain	162	30	30	0	0	132
Mean values:	216	133	103	30	9	69

### 4) Percentage of each wolf pack home range area within various land use designations

Pack	% HR in Forest (incl. wilderness)	% HR in Forest (excl. Wilderness)	% HR in Wilderness	% HR in GTNP/NER	% HR in Private
1) Washakie	77	54	23	0	23
2) Teton	89	89	0	11	0
3) Flat Creek	52	44	8	48	0
4) Beartooth	100	88	12	0	0
5) Sunlight Basin	95	80	15	0	5
6) Absaroka	61	49	12	0	39
7) South Fork	69	32	37	0	31
8) Wood River	8	8	0	0	92
9) Greybull River	60	36	24	0	40
10) Carter Mountain	19	19	0	0	81

#### Note:

HR = Home range

Mi<sup>2</sup> = miles<sup>2</sup>

GTNP/NER = Grand Teton National Park/National Elk Refuge.

Forest (incl. Wilderness) = area within National Forest which includes Wilderness land within the forest boundary.

Forest (excl. Wilderness) = area within National Forest excluding Wilderness land within the forest boundary.

Wilderness = area solely within Wilderness designated lands.

**Table 2: Wyoming wolf packs and population data 2005, and totals for Greater Yellowstone Recovery Area**

REF. #	WOLF PACK 1	RECOV		PACK SIZE DEC 2005			MORTALITIES			KNOWN		CONTROL		CONFIRMED LOSSES 6			
		AREA	STATE	ADULT	PUP	TOT	NAT	HUMAN 2	UNKN 3	DISPERSED	MISSING 4	KILLED 5	MOVED	CATTLE	SHEEP	DOGS	OTHER
<b><u>Yellowstone National Park Northern Range</u></b>																	
47	Swan Lake*	GYA	WY	3	0	3	4			2							
48	<u>Leopold</u>	GYA	WY	12	2	14	1										
49	Hellroaring Group	GYA	WY	7	0	7	1										
50	<u>Agate</u>	GYA	WY	5	3	8				2	1						
51	<u>Slough</u>	GYA	WY	12	3	15											
52	Druid	GYA	WY	4	0	4	1		1	1							
53	Unknown Group*	GYA	WY	3	0	3											
54	Geode (pack disbanned)	GYA	WY	0	0	0	2			3	3						
<b><u>Yellowstone National Park Non-Northern Range</u></b>																	
55	Mollie's	GYA	WY	7	0	7	2		1	1							
56	<u>Yellowstone Delta</u>	GYA	WY	12	5	17				1							
57	<u>Bechler</u>	GYA	WY	5	4	9											
58	Nez Perce*	GYA	WY	4	0	4	3			1	1						
59	Cougar Creek I	GYA	WY	5	0	5	1			1							
60	Cougar Creek II	GYA	WY	8	0	8											
61	<u>Gibbon Meadows</u>	GYA	WY	6	3	9	1			1							
62	<u>Hayden</u> *	GYA	WY	3	2	5											
<b>Total Inside YNP</b>		GYA	WY	96	22	118	16	0	2	13	5	0	0	0	0	0	0
<b><u>Wyoming Outside Yellowstone National Park</u></b>																	
63	<u>Washakie</u>	GYA	WY	4	6	10					3					1	
64	<u>East Fork</u>	GYA	WY	4	6	10										2	
65	<u>Teton</u>	GYA	WY	7	4	11	2	1	1		2					1	
66	<u>Flat Creek</u>	GYA	WY	3	5	8		1									
67	Pacific Creek	GYA	WY	11	?	11										4	
68	Beartooth	GYA	WY	6	?	6				1							
69	<u>Sunlight Basin</u>	GYA	WY	7	8	15	1				1					2	
70	<u>Absaroka</u>	GYA	WY	4	6	10		1			2					1	

**Table 2: Wyoming wolf packs and population data 2005, and totals for Greater Yellowstone Recovery Area**

REF. #	WOLF PACK 1	RECOV		PACK SIZE DEC 2005			MORTALITIES			KNOWN		CONTROL		CONFIRMED LOSSES 6			
		AREA	STATE	ADULT	PUP	TOT	NAT	HUMAN 2	UNKN 3	DISPERSED	MISSING 4	KILLED 5	MOVED	CATTLE	SHEEP	DOGS	OTHER
71	<u>South Fork</u>	GYA	WY	4	5	9								3			
72	<u>Wood River</u>	GYA	WY	2	3	5								1			
73	Greybull River	GYA	WY	6	?	6						2		6			
74	<u>Carter Mtn.</u>	GYA	WY	2	4	6						6		6			
75	Driggs/Teton	GYA	WY	5	0	5											
	Misc. outside YNP	GYA	WY	22	?	22	1		3			33		27	27	1	
	<b>Total outside YNP</b>	GYA	WY	87	47	134	4	3	5	0	8	41	0	54	27	1	0
	<b>Total Wyoming in GYA</b>	GYA	WY	183	69	252	20	3	7	13	13	41	0	54	27	1	0
	<b>WY part of GYA</b> (Table 2)	GYA	WY	183	69	252	20	3	7	13	13	41	0	54	27	1	0
	<b>MT part of GYA</b> (Table 1b)	GYA	MT	42+	15+	66	5	5	1	2	3	19	0	7	26	1	0
	<b>ID part of GYA</b> (Table 3)	GYA	ID	5	2	7	0	1	0	0	0	0	0	0	0	0	0
	<b>GYA TOTAL</b>			<b>230</b>	<b>86</b>	<b>325</b>	<b>25</b>	<b>9</b>	<b>8</b>	<b>15</b>	<b>16</b>	<b>60</b>	<b>0</b>	<b>61</b>	<b>53</b>	<b>2</b>	<b>0</b>

1 Underlined packs are counted as breeding pairs toward recovery goals.

2 Excludes wolves killed in control actions.

3 Does not include pups that disappeared before winter.

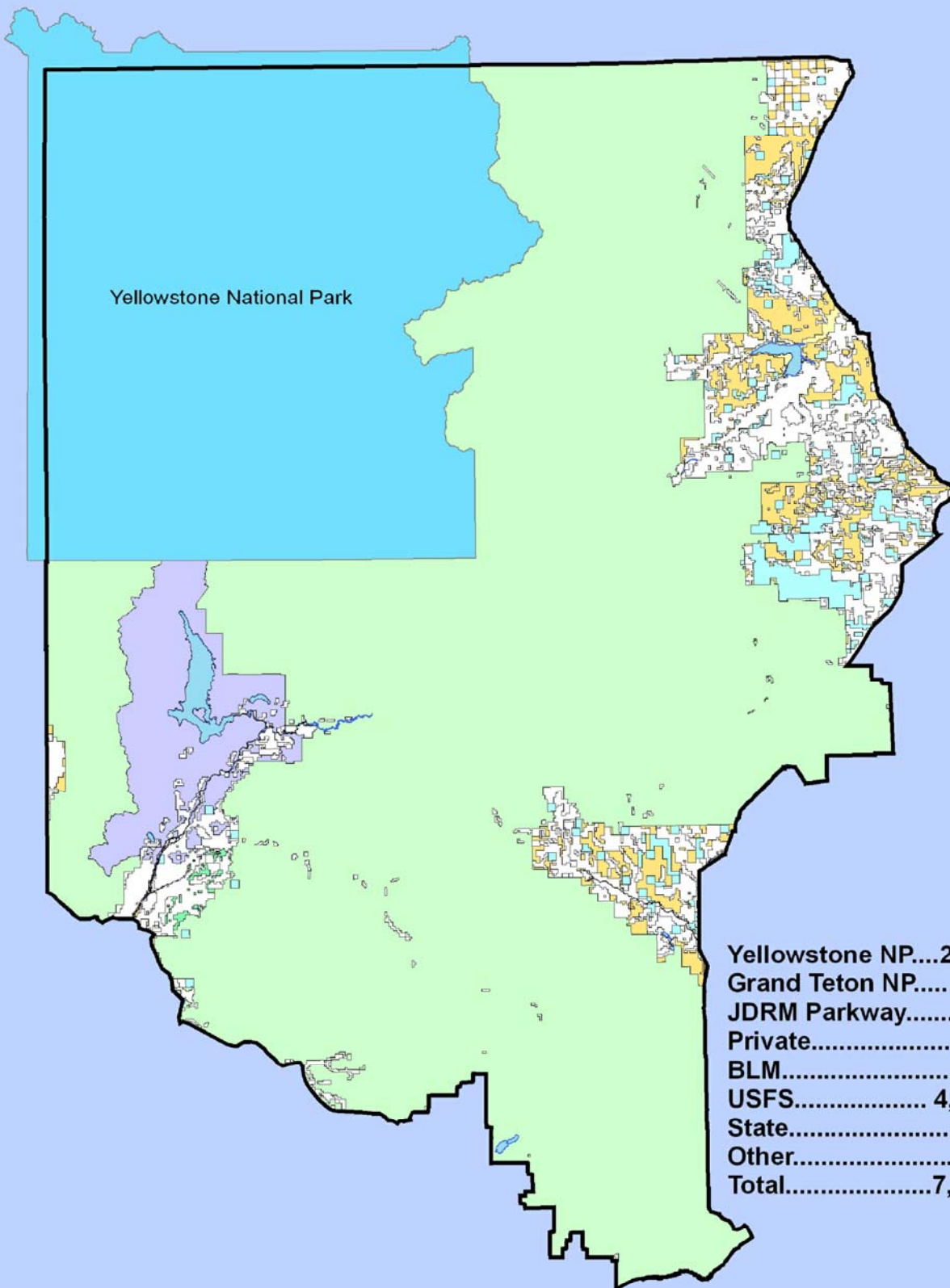
4 Collared wolves that ceased transmitting in 2005.

5 Includes agency lethal control.

6 Includes only domestic animals confirmed killed by wolves.

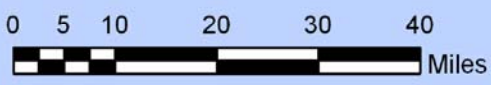
\* No collars; numerous reliable, verified reports.

file: FINAL 2005 WY and YNP Table 2 2-19-06



Yellowstone National Park

Yellowstone NP....	2,010,983 acres;	26%
Grand Teton NP.....	238,744 acres;	3%
JDRM Parkway.....	23,772 acres;	0.3%
Private.....	604,751 acres;	8%
BLM.....	197,686 acres;	3%
USFS.....	4,366,283 acres;	57%
State.....	119,081 acres;	2%
Other.....	59,034 acres;	1%
<b>Total.....</b>	<b>7,620,334 acres;</b>	<b>100%</b>



UTM Zone 12  
NAD27

November 2006