

Montana Wolf Hunt 2009



Some things you must do:

- Purchase a wolf hunting license (\$19 resident/\$350 nonresident) online at fwp.mt.gov, or from any FWP regional office or license provider.
- Call 1-800-385-7826 for the latest wolf harvest quota status and closure information before hunting.
- Report your harvest within 12 hours by calling the Wolf Reporting Hotline at: **1-877-FWP-WILD (1-877-397-9453)**.
- Present the tagged wolf hide and skull to a designated FWP employee within 10 days of the harvest for inspection.
 - Hides and skulls not presented to FWP within 10 days of harvest may be confiscated.

Some things you can't do:

- Use motorized vehicles—including OHVs and snowmobiles—to hunt wolves.
- Use dogs, bait, scent, lures, traps, lights, electronic tracking devices, or any recorded or electrically amplified bird or animal calls to hunt or attract wolves.

Some things you should know:

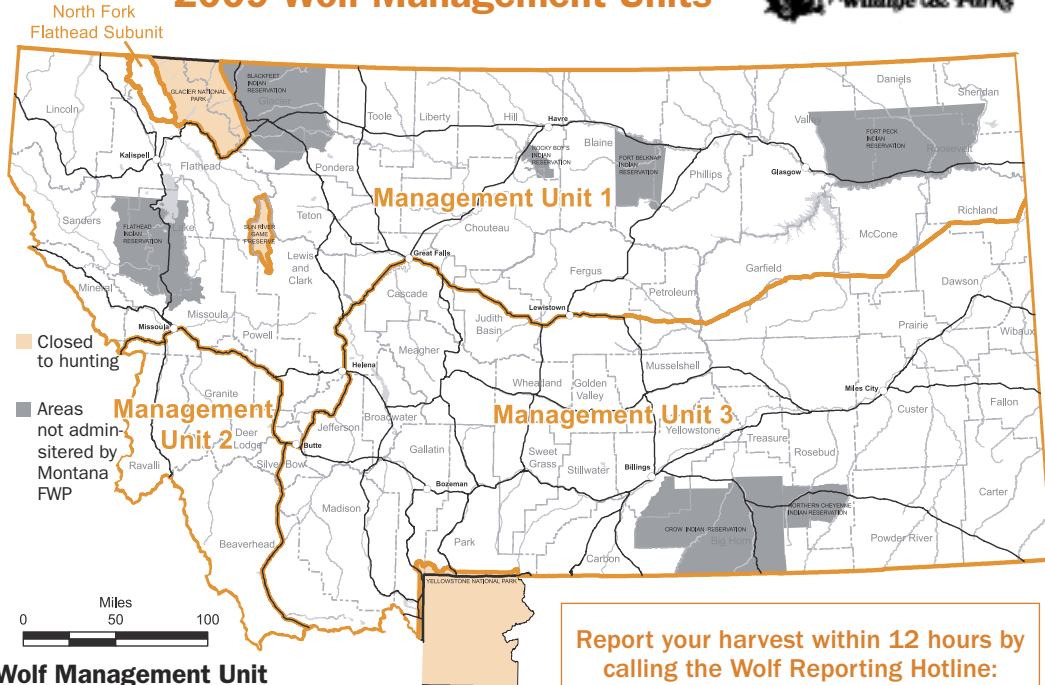
- Your target: a gray wolf is about 2.5 feet tall; 5-6 feet long; 70-120 pounds with a broad snout, round ears and fur ranging from gray, black or tan to white. Compared to a coyote, a wolf is massive and long-legged.
- Experts suggest you use a center-fire rifle suitable for big game.
- Wolves may travel on roads and trails; look for tracks and scat.
- Wolves communicate with each other via howls and other sounds. If you howl at the right time, you might draw in a wolf.
- Alert deer and elk may signal a wolf nearby.
- After the shot, follow the wolf to retrieve and tag it as you would any other big game animal. Wolves aren't known to defend a wounded or harvested wolf pack member.
- You can harvest a radio-collared wolf, but the collar must be returned to FWP. Please don't cut the collar belting.

- Some wolves suffer from mange—a parasitic infestation that results in the loss of fur. Avoid skinning a mangy wolf. Tag the animal and report the kill to FWP. You may be issued another wolf license.
- When skinning an animal use common-sense precautions:
 - Wear rubber (latex) gloves.
 - Minimize contact with animal fluids, brain and spinal tissues.
 - Wash hands and instruments thoroughly after field dressing.

For more information, visit FWP's Web site at fwp.mt.gov. Click "Montana Wolf Hunt."

Get your copy of Montana's official Wolf Hunting Regulations from any FWP license provider.

2009 Wolf Management Units



Wolf Management Unit Harvest Quotas

- North Fork Flathead Subunit: **2 wolves**
- WMU 1: **41 wolves**
- WMU 2: **22 wolves**
- WMU 3: **12 wolves**

Hunting will close in a WMU when harvest quota is met

Report your harvest within **12 hours** by calling the Wolf Reporting Hotline:
1-877-FWP-WILD
(1-877-397-9453)

For latest closure information call:
1-800-385-7826



Wolf hunting season dates:

SEPT. 15–NOV. 29, 2009

In early backcountry deer and elk hunting districts 150, 151, 280, and 316

OCT. 25–NOV. 29, 2009

In Wolf Management Units 1, 2, and 3

If certain quotas aren't met the wolf hunting season could be extended in some areas through Dec. 31, 2009.