

Citizens and Landowners, IT IS YOUR CHOICE...Protect Them or Lose Them!

The natural and historic values of the Hoback Rim, the Upper Green and the Upper New Fork Rivers as the entry way to the Wind River Range front are **irreplaceable!** These include:

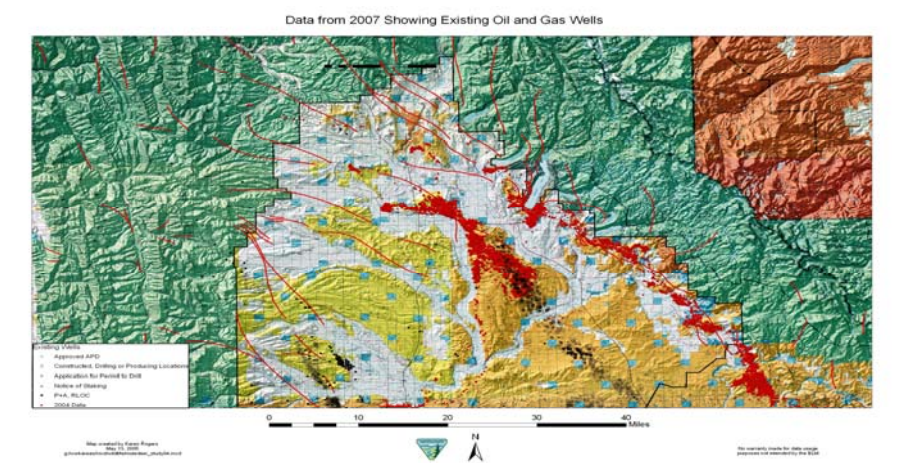
- Critical Antelope, Elk, Mule Deer and Moose migration corridors
- The pristine watershed of the Upper Green River
- A destination area for big game hunting, prime trout fishing and family recreation

These values would be irrevocably damaged by gas and oil production!



WE ARE a group of citizens and landowners in the Hoback Rim, Upper Green River, Upper New Fork River areas who have **chosen to act** to protect these areas.

OUR CONCERN is that the BLM's proposed Resource Management Plan (RMP) will open the area for leasing. Presently there is a moratorium on leasing in these areas for federal minerals. This moratorium was put in place in 2000 as mitigation concessions when decisions were made to drill the Pinedale Anticline. Development to date on the Pinedale (~700 wells) has impacted wildlife habitat and migration; mule deer population is down 43%. Planned development (~4400 wells) will further restrict wildlife migration and habitat for decades to come. This map with 2007 data shows mule deer winter habitat (red), existing gas wells (black) growing onto the Mesa and migration paths (red lines) through the Hoback Rim, the Upper Green River and along the Wind River Range front.



If the Hoback Rim, the Upper Green and the Upper New Fork River areas are leased, we cut off these traditional migration routes and remove critical wildlife habitat. Furthermore, we lose the reason many of us choose to live here as well as a crucial component of our local economy.

A 2001 study by the Wyoming Game and Fish Commission found that wildlife recreation contributed ~\$176 million annually to local economies. What happens when the gas play is over, if we have lost this renewable resource critical to the economy of Sublette County?

OUR POSITION is that the BLM should designate these areas as **Unavailable for Leasing**. The rate and pattern of oil and gas development in Sublette County is overwhelming our communities at every level. We need to pace development and protect wildlife migration corridors on the Wind River Range front while development continues on the Pinedale Anticline and the Jonah Field. Some areas epitomize all that we cherish about Wyoming; the area of the Hoback Rim, Upper Green River and New Fork River and Wind River Range front is such an area.

If you **CHOOSE TO LOSE**, to just do nothing...our children and grandchildren will suffer the consequences.

If you **CHOOSE TO PROTECT**, please contact your elected local, state and federal officials as well as the BLM.

1. WRITE YOUR ELECTED OFFICIALS AND LEADERS AS SHOWN BELOW: Urge them to keep *the Upper Green River, Upper New Fork and Hoback Rim areas* **Unavailable for Leasing** (everything east of US 191 from Pinedale north to the Rim). If you feel comfortable in doing so, please send a copy of your correspondence to us via Sara Flitner (sflitner@wyoming.com).

US Congress:

Senator Mike Enzi: lyn_shanaghy@enzi.senate.gov

Senator John Barrasso: pati_smith@barrasso.senate.gov

Rep. Barbara Cubin: bonnie.cannon@mail.house.gov

Sublette County Commissioners:

Joel Bousman, c/o Mary Lankford: maryl@sublettewyo.com

Bill Cramer, c/o Mary Lankford: maryl@sublettewyo.com

John Linn: c/o Mary Lankford: maryl@sublettewyo.com

2. WRITE THE BLM: Urge them to keep *the Upper Green River, Upper New Fork and Hoback Rim areas* **Unavailable for Leasing** (everything east of US 191 from Pinedale north to the Rim). If you feel comfortable in doing so, please send a copy of your correspondence to us via Sara Flitner (sflitner@wyoming.com).

Chuck Otto, Pinedale BLM Field Office Manager: pinedale_wymail@blm.gov

3. SHOW YOUR SUPPORT BY SIGNING A PETITION:

- In Bondurant go to the Post Office, Branding Iron or Elkhorn Bar.
- In Cora go to the Post Office or The Place.
- In Daniel go to the Post Office, Daniel Junction or Green River Bar.
- In Pinedale, go to the Chamber of Commerce, Tom's Saddle Shop, Sublette Feed or Rock Rabbit.
- Go to www.pinedaleonline.com to read a news story or search their archives
- For more information, contact Sara Flitner (sflitner@wyoming.com), Tucker Smith (onthirim@wyoming.com) or Tom Davenport (tdavenpo@wyoming.com)

4. HELP WITH EXPENSES, IF YOU CAN:

We have legal, consulting and travel expenses. You can help us get our message to the right people by sending donations to:

Landowners of the Upper Green
PO Box 153
Cora, WY 82925

THANK YOU! THANK YOU! THANK YOU! THANK YOU! THANK YOU! THANK YOU!