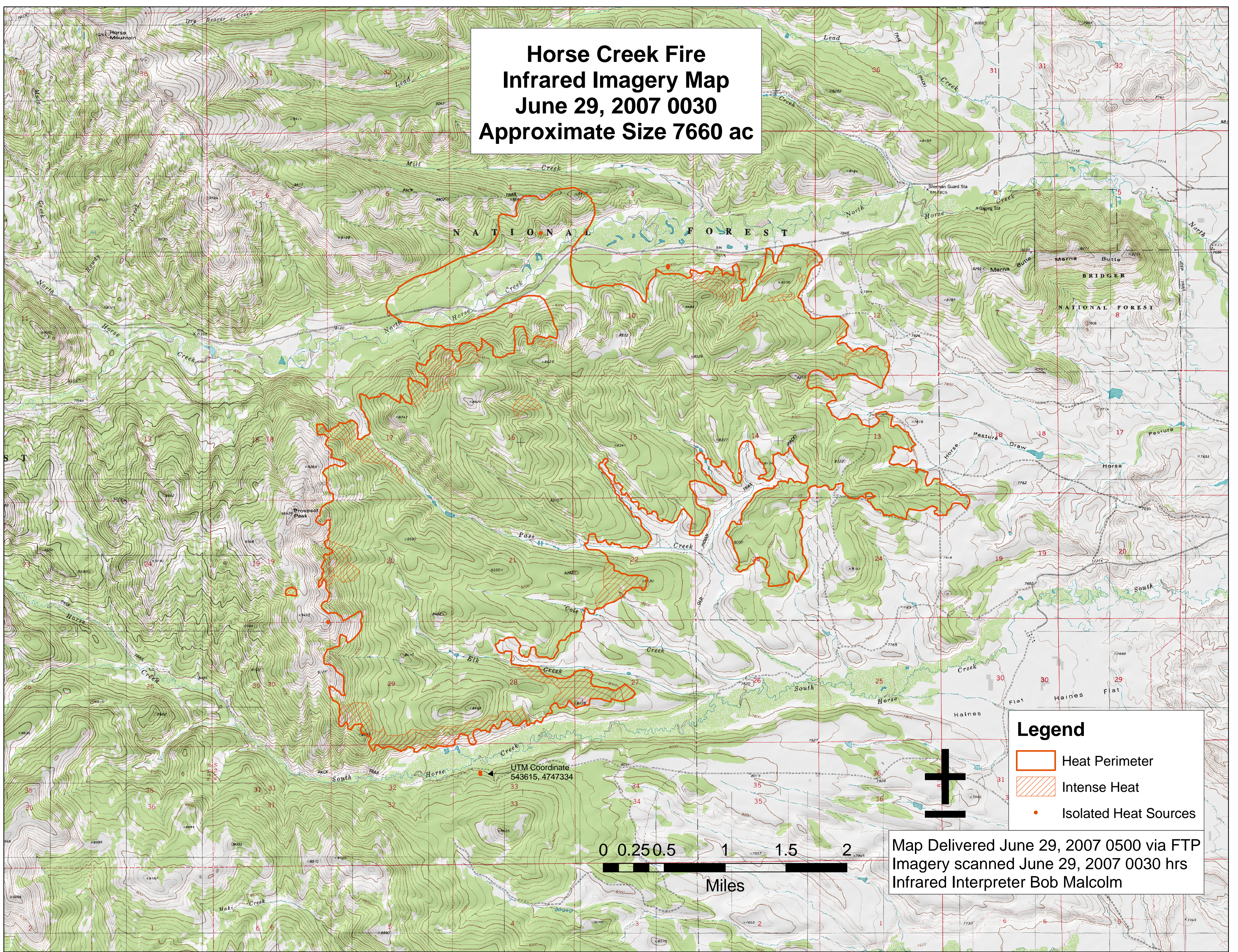





**Horse Creek Fire
Infrared Imagery Map
June 29, 2007 0030
Approximate Size 7660 ac**



Legend

-  Heat Perimeter
-  Intense Heat
-  Isolated Heat Sources



Map Delivered June 29, 2007 0500 via FTP
Imagery scanned June 29, 2007 0030 hrs
Infrared Interpreter Bob Malcolm

UTM Coordinate
543615, 4747334